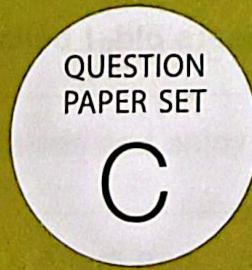


SOF INTERNATIONAL ENGLISH OLYMPIAD 2025-26



Total Questions : 35

Time : 1 hr.

Guidelines for the Candidate

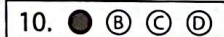
- 1. You will get additional ten minutes to fill up information about yourself on the OMR Sheet, before the start of the exam.
2. Write your Name, School Code, Class, Section, Roll No. and Mobile Number clearly on the OMR Sheet and do not forget to sign it.
3. The Question Paper comprises four sections: Word and Structure Knowledge (15 Questions), Reading (10 Questions), Spoken and Written Expression (5 Questions) and Achievers Section (5 Questions).
4. All questions are compulsory. There is no negative marking.
5. There is only ONE correct answer. Choose only ONE option for an answer.
6. To mark your choice of answers by darkening the circles on the OMR Sheet, use HB Pencil or Blue / Black ball point pen only.
7. Return the OMR Sheet to the invigilator at the end of the exam.
8. Please fill in your personal details in the space provided before attempting the paper.

Q.10: Fill in the blank.

My father went _____ to buy some milk.

- A. there B. their C. they're D. these

As the correct answer is option A, you must darken the circle corresponding to option A on the OMR Sheet.



Name:.....
SOF Olympiad Roll No.:..... Contact No.:.....

DO NOT OPEN THIS BOOKLET UNTIL ASKED TO DO SO

READING

For questions 16 to 20, read the passage and answer the questions that follow.

Sudha Murthy is a famous Indian writer and social worker. She was born on August 19, 1950, in a small town in Karnataka. From a young age, Sudha loved reading books and learning new things. She was very smart in school and always got good marks.

Sudha became one of the first women engineers in India. At that time, very few girls became engineers. Many people told her that engineering was only for boys. But Sudha didn't listen to them. She worked hard and became the first woman engineer at a big company called Tata Motors.

Sudha Murthy is also known for her kind heart. She believes in helping people in need. She is the chairperson of Infosys Foundation, a group that builds schools, hospitals, and libraries in poor areas. Sudha has helped thousands of children go to school and get a better life.

Even though she is very busy, she writes wonderful books for children and adults. Her stories are simple, interesting, and teach good values like honesty, kindness, and hard work. Some of her popular books are "Grandma's Bag of Stories", "The Magic of the Lost Temple", and "Wise and Otherwise".

One day, Sudha visited a school in a village. She saw that the children had no books to read. The school was very old and had broken walls. She decided to help. She built a new school building and sent many storybooks for the children. The students were so happy! They now had a clean classroom and fun books to read. Sudha Murthy wears simple clothes and lives a simple life. She says, "We must give more than we take." She teaches children to work hard, help others, and always be proud of who they are.

- 16** Choose the incorrect statement.
- A. Sudha Murthy visited a village school and saw children without books.
 - B. Sudha Murthy is the chairperson of Infosys Foundation.
 - C. Sudha Murthy writes wonderful books only for children.
 - D. Sudha Murthy's stories are very simple, interesting and teach good values.

- 17** Which of the following is a book written by Sudha Murthy?
- A. The Lost World
 - B. Alice in Wonderland
 - C. The Jungle Book
 - D. Grandma's Bag of Stories

18 Sudha Murthy lives her life_____.

- A. working and being boastful B. with many luxuries
C. wearing fancy clothes D. simply and humbly

19 Why is Sudha Murthy called a social worker?

- A. Because she works hard and is helped by others
B. Because she helps poor people and builds schools and hospitals
C. Because she is the first woman engineer in India
D. Because she is very smart and gets good marks

20 Choose the correct synonym of the word 'social'.

- A. Distant B. Mute
C. Hospitable D. Aloof

For questions 21 to 25, read the passage and answer the questions that follow.

In a small town lived two young artists, Sue and Johnsy. They were best friends and shared a little room. They loved painting and dreamed of becoming great artists one day.

One winter, Johnsy fell very sick with pneumonia, a serious illness. She grew weak and stayed in bed all day, looking out of the window at a big tree outside. The cold wind had blown away most of the tree's leaves.

Johnsy was very sad. She stared at the tree and said, "When the last leaf falls, I will also go. I won't get better." Sue was worried. She tried to cheer Johnsy up with jokes and drawings, but nothing worked. Johnsy believed her life would end when the last leaf on the tree fell.

In the same building lived an old artist named Behrman. He was kind but had never painted a great picture in his life. Sue told him about Johnsy's strange belief. That night, a terrible storm blew through the town. Sue was scared that the last leaf would fall. But in the morning, when Johnsy looked out of the window, she was surprised.

"The last leaf is still there!" she whispered. Day after day, the leaf stayed. It gave Johnsy hope. Slowly, she began to eat, smile, and grow stronger. The doctor said that she would recover. Then Sue told Johnsy the truth.

"That last leaf was not real," Sue said softly. "Mr. Behrman painted it on the night of the storm. He wanted to give you hope." Johnsy's eyes widened. "He painted it? In the cold wind and rain?"

Sue nodded sadly. "Yes, but he caught pneumonia himself while painting it and he passed away." Johnsy was silent. Her heart was full of sadness but also thankfulness. Behrman's last painting—a single green leaf—was his greatest masterpiece. It saved a life.

21 Choose the incorrect statement.

- A. Sue and Johnsy loved painting and dreamed of becoming great artists.
- B. Johnsy was looking out of the window at a creeper.
- C. Behrman had never created a great picture in his life.
- D. Behrman was a kind but unsuccessful artist.

22 Choose the correct sequence of the statements according to the passage.

1. One night, a terrible storm blew through the town.
2. Gradually, Johnsy began to eat, smile and grow stronger.
3. Sue tried to cheer Johnsy up with jokes and drawings.
4. Johnsy fell sick with a serious illness called pneumonia.
5. Behrman painted the last leaf in the night of the storm.

- A. 3, 2, 4, 1, 5
- B. 1, 2, 3, 5, 4
- C. 4, 3, 1, 5, 2
- D. 3, 5, 2, 1, 4

23 What was special about Behrman's painting of the leaf?

- A. It gave Johnsy a hope to live.
- B. It was painted on paper.
- C. It was his last painting after he caught pneumonia.
- D. It was the biggest painting ever.

24 After painting the last leaf, Behrman _____.

- A. became famous
- B. caught pneumonia and died
- C. left the town
- D. ruined a life

25 Choose the correct synonym of the word 'nodded'.

- A. Bobbed
- B. Played
- C. Bickered
- D. Wakened

SPOKEN AND WRITTEN EXPRESSION

For questions 26 to 30, choose the correct option to complete each conversation.

26 Ruby : Yesterday, my mother _____ to the market to buy me a dress.

Kim : My mother also bought a red one for me.

- A. goes
- B. has gone
- C. went
- D. going



27 Liam : I think we should leave now _____ it's getting late.

- A. so
- B. as
- C. yet
- D. but

28 Tim : Don't worry about that. It's all up to _____ now!

- A. our
- B. ours
- C. us
- D. we

29 Son : The smell coming _____ the garbage bin is disgusting.

Mother : Then, let's clean it out immediately.

- A. in
- B. for
- C. from
- D. into



30 Riya : I saw a _____ of people that had gathered to watch the street play.

Simran : I'd love to watch it too.

- A. bundle
- B. pile
- C. crowd
- D. gang

ACHIEVERS SECTION

For questions 31 and 32, choose the correct option to fill in the blank.

- 31 Christmas is the _____ of giving, sharing and merry-making.
- A. session
B. section
C. segment
D. season
-
- 32 The dancer performed so _____ that she appeared to be gliding through the air.
- A. gracious
B. gracefully
C. graceful
D. grace

Choose the correct synonym of irksome.

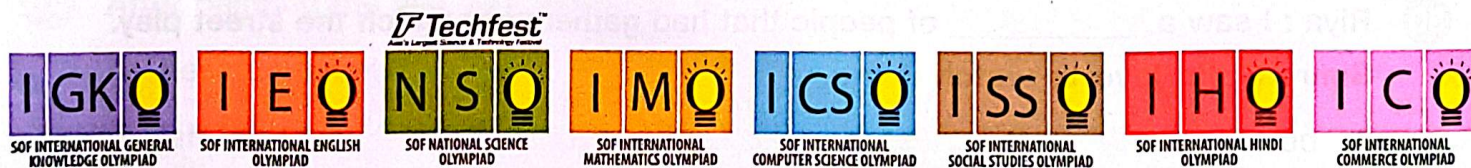
- 33
- A. Affable
B. Delightful
C. Luscious
D. Annoying

Choose the correct antonym of gravity.

- 34
- A. Graveness
B. Gaiety
C. Intensity
D. Soberness

Choose the correct option to complete the conversation.

- 35 Max : I cannot _____ the shock of losing my pet dog.
- A. get off
B. get on
C. get over
D. get upon



For latest updates & information, please like our Facebook page (www.facebook.com/sofworld) or register on www.sofworld.org/subscribe-updates.html

For Level 1 and Level 2 preparation material / free sample papers, please log on to www.mtg.in



Head Office: Plot 99, Sector 44 Institutional area, Gurugram -122 003 (HR), India
Email: info@sofworld.org | Website: www.sofworld.org